

## BFP LIFT-OFF ENCLOSURE

*WATER SAFE*®

### SPECIFICATION SHEET for MODELS: WS-1S , WS-2S, WS-1FMYA, WS-2FMYA, WS-SP1, WS-2FMYA/P & WS-SP1/P

---

#### Physical Properties:

Size of Pipe and BFP Device:	WS-1S	1/4"- 1"	WS-1FMYA	3/4 "- 1"
	WS-2S	1 1/4"- 2"	WS-2FMYA	1 1/2"- 2"
	WS-SP1	1/2"-2"		

Construction: Open Bottom & Insulated Walls & Roof

Mounting: Open bottom sits on and is anchored to a concrete base furnished by others.

Temperature Range: -60 Degrees F to 140 Degrees F (ambient temperature)

---

#### Materials:

Outside Skin: .050" Mill Finish 5052 H32 Aluminum or  
.050" 3105 H14 Aluminum pre-painted with 70% KYNAR/HYLAR based  
Fluoropolymer

Insulation: 1.5" Polyisocyanurate with aluminum foil facers, R Value of 12

Adhesive: Silicone base, permanently flexible from -60 Degrees F to 400 Degrees F

Hinge for Drain: 304 Stainless Steel

Rivet: 304 Stainless Steel rivet & pin

Mounting Bracket: 304 Stainless Steel

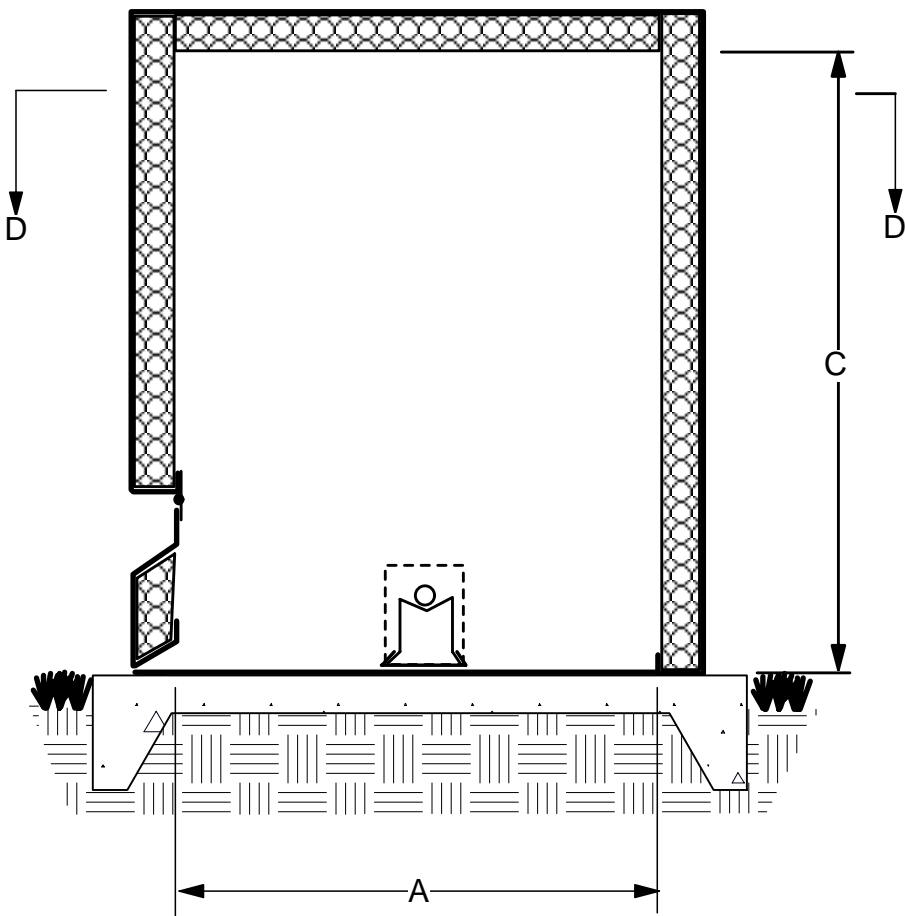
Concrete Fasteners: 95% zinc, 4% aluminum hit anchor  
Conforms to ASTM E 488  
Rating: 980 lbs in tension, 1400 lbs in shear for 2000 psi concrete  
The values listed above are ultimate load capacities in pounds  
which should be reduced by a minimum safety factor of four or  
greater to determine the allowable working load.

---

#### Application:

Freeze, vandal and heat protection conforming to ASSE 1060, Classes I & II





**SIDE ELEVATION VIEW  
SECTION E - E**

*WATER SAFE®*

**INTERIOR DIMENSIONS FOR  
LIFT OFF ENCLOSURES**

MODEL NO.	A	B	C
WS-1S	32"	7"	22"
WS-2S	43"	14"	29"
WS-1FMYA*	15"	7"	21"
WS-2FMYA**	19"	10"	22"
WS-SP1***	32"	9"	24"

**CONCRETE BASE SIZE:**

WS-1S	43" x 18"
WS-2S	54" x 25"
WS-1FMYA	26" x 18"
WS-2FMYA	30" x 21"
WS-SP1	43" x 20"



**ENCLOSURES**

*WATER SAFE®*

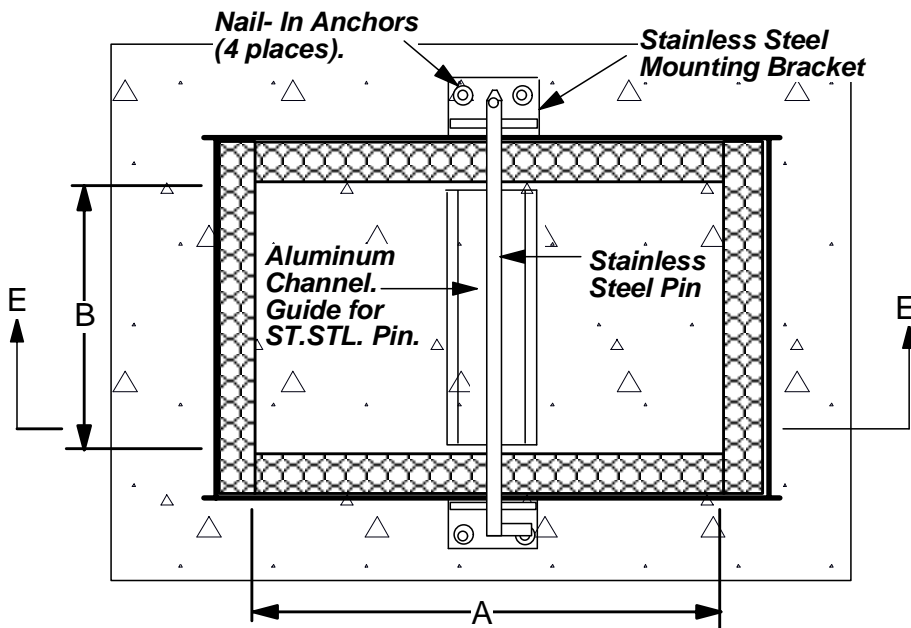
*COVERALL®*

*ROLL TOP™*

**NOTE:**

The concrete base sizes given above allow approximately 4" around the outside of the enclosure. The dimensions are length first; then width. Recommended minimum thickness of 4". Check local codes in your area before placing base.

Enclosures designed for following  
 \* 3/4" & 1" FEBCO 825YA  
 \*\* 1 1/2" & 2" FEBCO 825YA  
 \*\*\* 1/2" thru 2" WATTS U009QT and many other installations(consult factory).



**PLAN VIEW  
SECTION D-D**

**G & C ENCLOSURES, Inc.**

60 Athens Drive  
 Mt. Juliet, TN 37122  
 ph. 888-753-6565  
 fax 615-754-6072

© 1997 G & C Enclosures, Inc.

U.S. Patent No. 5,996,611  
 U.S. Patent No. 5,740,832  
 U.S. Patent No. 5,743,289  
 U.S. Patent No. 6,021,804  
 U.S. Patent No. 6,293,301  
 U.S. Patent No. 6,311,720

WSID-L.O.-51402