

**BFP PANEL DESIGN ENCLOSURE
4 DOOR ACCESS**

WATER SAFE ®

**SPECIFICATION SHEET for MODELS:
WS-10-NRS WS- 8,10-NRS-S WS-10-OSY WS- 8,10-OSY-S**

Physical Properties:

Size of Pipe and BFP Device: 8" & 10"

Construction: Open Bottom With Insulated Walls & Roof

Mounting: Open bottom sits on and is anchored to a concrete base furnished by others.

Temperature Range: -60 Degrees F to 140 Degrees F (ambient temperature)

Materials:

Outside Skin: .050" Mill Finish 5052 H32 Aluminum or
.050" 3105 H14 Aluminum pre-painted with 70% KYNAR/HYLAR based
Fluoropolymer

Insulation: 1.5" Polyisocyanurate with aluminum foil facers, R Value of 12 for side walls
3" Polyisocyanurate with aluminum foil facers, R Value of 25 for roof

Adhesive: Silicone base, permanently flexible from -60 Degrees F to 400 Degrees F

Hinge for Drain: 304 Stainless Steel Rivet: 304 Stainless Steel rivet & pin

Panel Fasteners: 304 Stainless Steel hex head screws

Structural Supports: 1/8" Mill Finish 5052 H32 Aluminum

Gasketing: EPDM Elastomer

Concrete Fasteners: AISI 304 Stainless Steel Wedge Anchor
Conforms to ASTM A276
Rating: ULTIMATE TENSILE & SHEAR LOADS
1750 lbs. in tension/2000 PSI concrete/2" embedment
2200 lbs. in shear/2000 PSI concrete/2" embedment
ALLOWABLE WORKING LOADS
470 lbs. in tension/2000 PSI concrete/2" embedment
590 lbs. in shear/2000 PSI concrete/2" embedment

Application:

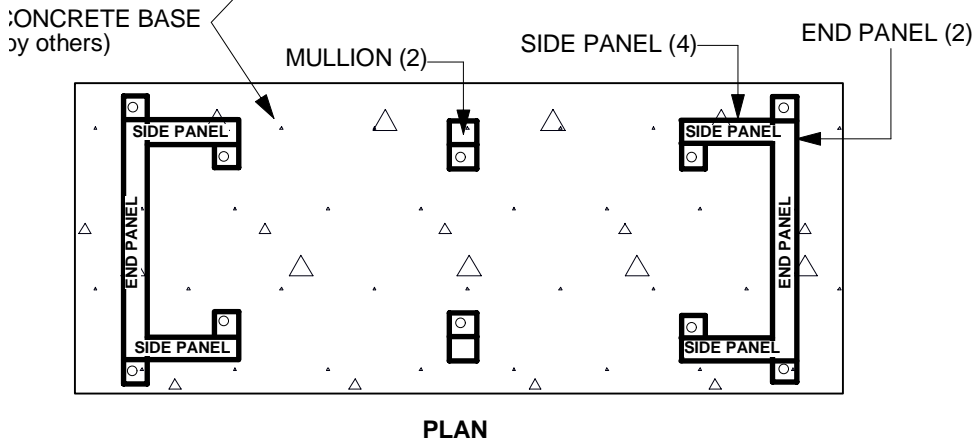
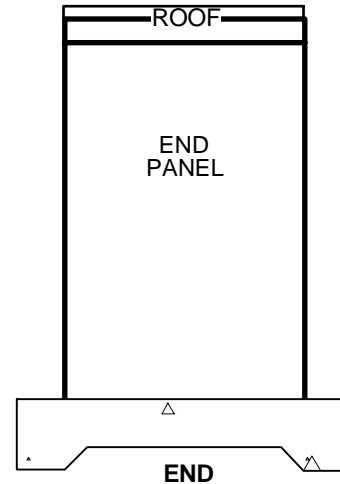
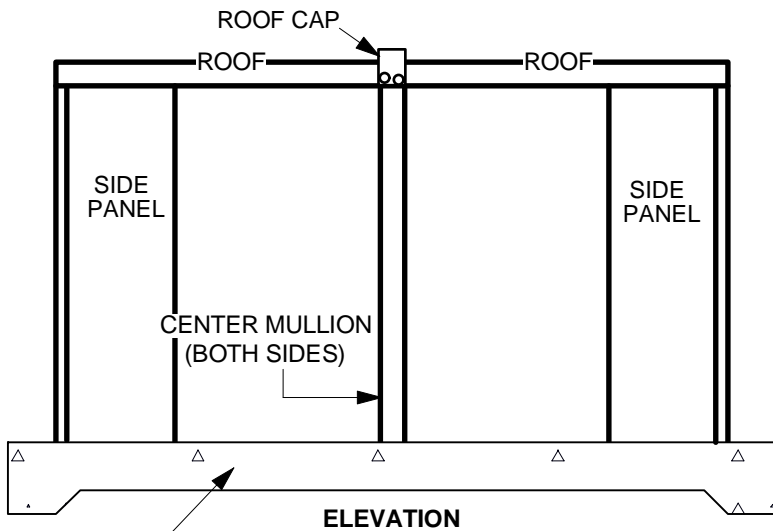
Freeze, vandal and heat protection conforming to ASSE 1060, Classes I & II



WATER SAFE®

INTERIOR DIMENSIONS FOR FOUR (4) ACCESS PANEL ENCLOSURES

MODEL NO.	WIDTH	LENGTH	HEIGHT	ACCESS OPENING	SHIPPING WEIGHTS	CONCRETE BASE SIZE
WS-8-NRS-S	38"	144"	55.5"	38.5" X 54"	416#	53" x 159"
WS-8-OSY-S	38"	144"	80"	38.5" X 78.5"	486#	53" x 159"
WS-10-NRS	38"	144"	80"	38.5" X 78.5"	486#	53" x 159"
WS-10-NRS-S	38"	174"	80"	38.5" X 78.5"	533#	53" x 189"
WS-10-OSY	38"	144"	90"	38.5" X 88.5"	510#	53" x 159"
WS-10-OSY-S	38"	174"	90"	38.5" X 88.5"	595#	53" x 189"



NOTE: The concrete base sizes given above allow approximately 6" around the outside of the enclosure. Check local codes in your area before placing base.

- U.S. Patent No. 5,996,611
- U.S. Patent No. 6,021,804
- U.S. Patent No. 5,743,289
- U.S. Patent No. 5,740,832
- U.S. Patent No. 6,293,301
- U.S. Patent No. 6,311,720